



# Contractors Mechanical Plant Engineers

## NATIONAL NEWSLETTER

=====

**Welcome to another edition of your National Newsletter.**

### CMPE NEWS

#### **CMPE Annual Subscriptions**

We are now in our new financial year and it would be timely to remind all branches and members of the following:-

- “Annual Subscriptions” are due from the 1st April 2024.
- Any member whose subscription has not been paid by 31st May 2024 will *ipso facto* cease to be a member of the Association.
- Branch Honorary Treasurers are to remit to the Honorary National Treasurer half of the Annual Subscriptions paid to the branch by the 30th June 2024 and all new members subscriptions thereafter are to be remitted every three months.
- The Annual Subscriptions remitted to the Honorary National Treasurer must be accompanied with a list of the members names and addresses, telephone numbers, email address, and whether they are a full or retired member.

Your co-operation to the rules of the association would be appreciated.

=====

#### **CMPE 60th National AGM**

The next National event will be the CMPE 60th National AGM weekend to be held at the Alma Lodge Hotel in Stockport, Cheshire. Full details follow below:-



# CMPE 60th NAGM.

21st—23rd June 2024

Our current National Chairman David Hodges and his Lady Jo, are proud to host the 60th National Annual General Meeting weekend of the Contractors Mechanical Plant Engineers.

This is a great weekend focusing on the social side to the CMPE, your support as always is greatly appreciated.

## ALMA LODGE

HOTEL & RESTAURANT

149 Buxton Road, Stockport,  
SK26EL.

**21st—23rd June 2024.**



### Costs:

Couples full weekend package including Dinner Dance **£320.00**

Single persons full weekend including Dinner Dance **£250.00**

Saturday night Dinner Dance tickets **£45.00 per person.**

Saturday night Room bed and breakfast **£95.00**

All Bookings must be received by 6th June 2024

Please use the booking form attached.



# CMPE 60th NAGM.

21st—23rd June 2024

## **What to expect at a NAGM weekend.**

Friday evening is very relaxed with a chance to catch up with friends and unwind from your journey. A buffet dinner will be provided.

Saturday morning after breakfast is the AGM open to all members and anyone who wishes to observe.

A light buffet lunch will be laid on after the meeting.

Saturday afternoon is free to enjoy as you wish, attached is list of a few things to do.

Saturday evening and its time to get dressed up and head to the Dinner and Dance where a small band will be entertaining us with music from the 60s. with great food, drinks flowing and fantastic company this will be a great evening.





# CMPE 60th NAGM.

21st—23rd June 2024

## Things to do in Stockport.

I thought I'd put together this little list of some things to do in Stockport.

Stockport is a historic market town just south of Manchester, England. In the 18th/19th centuries, Stockport was a big deal in the region's textile production and grew to be the capital of the UK's hat-making industry. There's even a hat museum there now.

Today, Stockport is often overshadowed by the popular city of Manchester being so close to it. But Stockport has seen a lot of regeneration lately. And it actually has some brilliant stuff going on, from excellent craft beer bars to gorgeous and unusual shops, as well as a brilliant market and great foodie scene.

If you like art deco design and homemade scones you have to visit Stockport Plaza. It's a beautiful 1930s art deco theatre that also does afternoon tea in the café upstairs. The staff all wear traditional white aprons and the furniture is all the Lloyd Loom stuff you'd expect from such an era. *This is a 7-minute drive from Alma lodge or 30-minute walk. Mersey Square, SK11SP.*

Considering Stockport town centre isn't massive, it does well on the hoppy beer front.

Bakers Vaults – A gorgeous Grade II listed building, featuring some very pretty floor tiles and a great atmosphere. You can get some brilliant food here and craft beers such as Titanic Plum Porter, being on tap. It's a Robinsons pub so they have local beer too. *This is a 7-minute drive from Alma lodge or 30-minute walk. Or better option a taxi. Market Place, SK11EU*

- Project 53 – A craft beer taproom for the local Mobberley Brewhouse, featuring a range of craft beer (and gin) *again this is a 7-minute drive or 30-minute walk. Market Place, SK11EU*

The Underbanks area consists of Little Underbank and Lower Hillgate. Start any day out in Stockport here. It's the epicentre of all the best places to eat, drink and shop. *6 minutes by car 30-minute walk.* There is also a market on a Saturday.

## CMPE 60th NAGM. 21st—23rd June 2024



Name: \_\_\_\_\_

Please indicate which option

Couple full weekend £320.00	
Single Full weekend £250.00	
Saturday Bed and breakfast 95.00	
Saturday Dinner Dance £45.00 per person	

Meal choice for Saturday Dinner

Please provide guest name.

Starters		
Chicken liver parfait, served with red onion marmalade and toasted sourdough		
Homemade vegetable soup, served with a crusty roll.		
Seasonal melon served with forest fruits and fruit coulis.		
Pan fried garlic mushrooms, served on sour-		
Main course		
Roast beef and Yorkshire pudding, served with chef potatoes, vegetables and pan gravy.		
Fish of the day, served with a sauce of chefs choice, vegetables and potatoes.		
Roast breast of chicken chasseur, served in a tomato, mushroom and tarragon sauce with chefs vegetables and potatoes.		
Beetroot and red onion tarte tatin served with rocket and balsamic.		
Dessert		
Strawberry cheesecake		
Sticky toffee pudding with toffee sauce		
Peach melba, meringue pieces mixed with cream and fresh peaches.		
Crème brulee served with lemon and vanilla shortbread.		

Please return booking form to Grace Tidbury: [cmpesecretary@gmail.com](mailto:cmpesecretary@gmail.com)

Payment is due upon booking to:

Contractors Mechanical Plant Engineers

Sort Code: 20-42-58

Account No: 30801135

**ALL BOOKINGS MUST BE RECEIVED BY 6th JUNE 2024**

## INDUSTRY NEWS

### Hydrogen lobby makes case for hydrogen – and EU alignment



A UK trade association has advised the government to align its hydrogen fuel policy with that of the European Union.

While many have seen Brexit as an opportunity to do things differently from mainland Europe, more often than not it makes sense to be aligned.

That is one of the messages from the Hydrogen Energy Association (HEA) in its response to a government consultation on the decarbonisation of construction machinery.

The government has been soliciting views from industry as to whether batteries, hydrogen or something else altogether represents the future for powering non-road mobile machinery (NRMM). The consultation period closed on 26th March.

In its submission, the Hydrogen Energy Association (HEA), which represents 120 hydrogen businesses, unsurprisingly put the case that hydrogen was the future fuel for construction machinery. Its core message was that hydrogen must be considered part of the mix for fuelling the construction industry.

“Both hydrogen internal combustion engines (ICEs) and fuel cells offer benefits for NRMM decarbonisation,” it said. “Whilst ICEs offer reduced initial investment for manufacturers looking to switch from fossil fuels together with zero carbon and minimal NOx emissions, fuel cells offer low operational costs, reliability and zero emissions.”

It said: “Due to these challenging operating conditions, certain technologies, such as battery electric and tethered electric, may not be suitable for all NRMM applications. Remote sites, areas with high grid constraints, and construction sites pose issues for the provision of electricity and reduce the viability of electric solutions. Hydrogen solutions are not subject to the same constraints.

“Overall, the government must recognise that the decarbonisation of NRMM cannot be satisfied by a single technology. Favouring particular technologies, such as electrification, should be avoided, as this risks undermining other solutions, as well as any new solutions developed in the future.

“To reiterate, a well-functioning decarbonised NRMM sector will include a range of technology options which reflect the specific requirements of NRMM such as durability, flexibility, robustness. Hydrogen solutions are particularly well suited to meet these requirements, and any future government policy decisions should reflect this.”

More interestingly, the HEA's response also recommended that government align with the EU's inclusion of hydrogen ICE as a zero-emissions technology to avoid disadvantaging UK industries and disincentivising investment.

It also suggested lessons could be taken from both the Netherlands and Norway. The Netherlands has introduced a subsidy for clean and zero emission construction equipment (SSEB), which includes separate funding strands for purchasing, retrofitting and experimenting. Norway's government provides subsidies for the purchase of electric construction machinery, which can be as much as 40% of the additional cost of the machine compared to the diesel alternative.

---

## Filling a gap: Case 651G Evolution

Case Construction Equipment has upgraded its mid-sized wheeled loader range, with the launch of an eighth model to the range.



The new Case 651G Evolution fills a gap between the 621G and the 721G. Based on the parent model 621G, the new model offers improved loading performance, Case says.

The larger 721G, 821G and 921G Evolution models have also been upgraded, with increased tipping loads and bucket dump heights. This additional performance has allowed Case to offer a

new range of higher capacity rehandling buckets on all models from the 651G to the 921G, with curved side edges and a redesigned top guard delivering increased capacities, improved bucket penetration and material retention.

The 651G Evolution, along with the three larger models, has reinforced front and rear chassis sections to cope with the increased performance. Heavy duty axles are now fitted as standard, with a choice of differentials on each axle. Customers can choose between a 100% differential lock on the front axle and an open differential on the rear, a 100% differential lock on the front and a limited slip differential at the rear, or a limited slip differential in both axles.

The eG-Series Evolution wheeled loaders are powered by EU Stage V FPT Industrial diesel engines. These have a capacity of 4.5-litres on the 521G, 6.7-litres on the 621G to 921G and 8.7-litres for the 1021G and 1121G. Wastegate turbochargers are used on all

models up to the 921G, with variable geometry turbos for the two larger models. All engines use FPT's Hi-eSCR2 after-treatment system, with no requirement for exhaust gas recirculation (EGR).

As with other G Evolution machines, service intervals have been extended from 500 to 1,000 hours.

The 651G Evolution comes with telematics enabled by a 4G SiteConnect Module that can be accessed via the new SiteManager App. SiteConnect enables communication between machines and dealers, who can run remote diagnostics.



## TC Harrison acquires Gunn JCB

Two of JCB's oldest dealers are joining forces.



TC Harrison Group has agreed to acquire its neighbouring JCB dealer Gunn JCB.

All the existing Gunn JCB team will continue to operate under the leadership of divisional director Wendy Asquith from completion of the transaction.

Founded in 1931, TC Harrison's JCB operation is one of the oldest authorised JCB dealers in the UK. It operates six regional depots covering Yorkshire, Nottinghamshire, Lincolnshire, Derbyshire,

Humberside and the northeast.

However, the larger part of group business is as a Ford car and van dealer in the East Midlands. The family-owned group turned over £327m in 2022 and made a pre-tax profit of £7.6m.

Gunn JCB's turnover in the same year was £118m and it made a pre-tax profit of £2m.

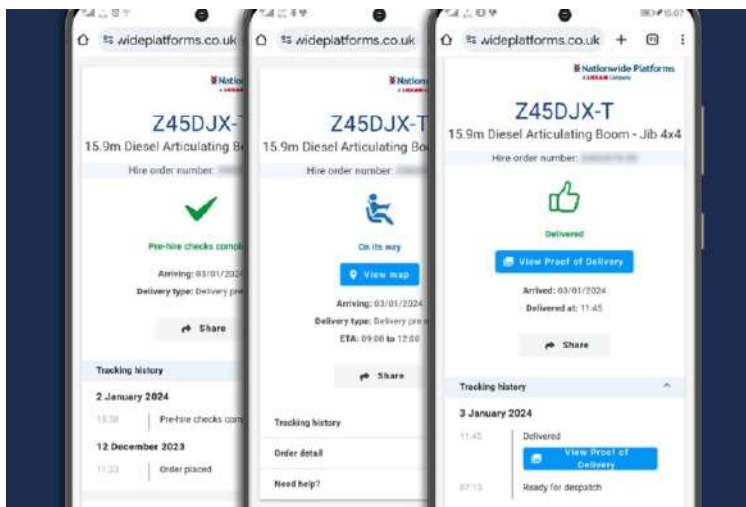
Operating since 1958, Gunn JCB has dealerships in Altrincham, Shrewsbury, Ruthin, Preston, Marchington, and the Isle of Man. Owner and managing director Paul Hartshorn turns 60 at the end of this year. Last year he sold his Midlands JCB division last year to a management buyout.



William Harrison, deputy chairman of TC Harrison Group, said: “We are committed to ensuring a seamless transition for Gunn JCB customers. The Gunn JCB name will remain unchanged, and the team will continue to provide the exceptional service our Gunn JCB customers have come to expect.

## Delivery tracking comes to plant hire

Taxi firms do it, parcel companies do it, now plant hire companies are starting to do it – track your delivery.



Tracking technology becoming mainstream has largely put an end to waiting in all day for that parcel to arrive. Now the UK’s biggest powered access hire company is letting its customers track the machine they have ordered.

In fact, Nationwide Platforms’ HireTracker allows a customer to track their hire through every stage of the rental process, with a live tracking link that remains active from the moment the order is placed all the way until the machine has been

collected at the end of the hire period. The customer can check in on the delivery at any time by clicking on the link, which will direct them to a screen displaying real-time updates on the progress of the hire.

As with other courier systems, once the hire is out for delivery, customers can see the driver’s location in real-time.

HireTracker works on collections too, meaning a customer can also use the same system to ensure their machine has been picked up by the courier.

Nationwide Platforms chief operating officer Daniel Smith said: “We make every effort to take on board customer feedback, and HireTracker is a direct answer to many customer requests.

“Knowing the precise arrival time of a machine enables you to plan your day more efficiently. You’re no longer left waiting around all day, nor are you forced to rearrange your schedule for a vague delivery window. Instead, through real-time updates and accurate delivery estimates, HireTracker empowers you to make informed decisions about how to best manage your time and resources. Whether your machine is being dispatched or only a few doors away, you’ll be the first to know.”



## **Contractors Mechanical Plant Engineers**

### **National Chairman**

David Hodges - [etpl@hotmail.co.uk](mailto:etpl@hotmail.co.uk)

Tel: 01663 745034

### **National Secretary**

Grace Tidbury - [cmpesecretary@gmail.com](mailto:cmpesecretary@gmail.com)

Tel: 07473 264539

### **National Registrar**

Denise Holcroft - [denise@vmrtraining.co.uk](mailto:denise@vmrtraining.co.uk)

Tel: 01772 782455

### **Newsletter Editor**

David Nicholson - [cmpepreston@gmail.com](mailto:cmpepreston@gmail.com)

Tel: 07903 848200

### **CMPE Website:**

[www.cmpe.co.uk](http://www.cmpe.co.uk)



**01772 782 455 : 01772 78 533**